

Stockingford
Nursery School

Stockingford Little Nursery



Prospectus 2021 - 22

*Working for
Warwickshire*





St Paul's Road, Nuneaton, Warwickshire. CV10 8HW

Sharon Kindred B.Ed, MA, NPQH
Headteacher

Welcome to Little Nursery

Dear Parents/Carers

A very warm welcome to our Little Nursery and thank you for choosing us to provide high quality learning and care for your child.



There has been a Nursery School on site in Stockingford since the 1940's and many of our parents (and grandparents!) have fond memories of their own time here. We are a maintained school and are led by myself as Headteacher, supported by qualified teachers and early years practitioners supporting and extending learning.

Please note that we are a Local Authority Maintained School in our own right and are not a part of any of the local Primary Schools.

We pride ourselves on offering a welcoming, safe and stimulating environment, with high quality teaching and learning experiences for children aged 2 - 4 years old. We recognise that children's foundations for learning are embedded in their early years experiences and we work in close partnership with home to support learning and development together.

We look forward to starting our learning journey with you!

Kind regards

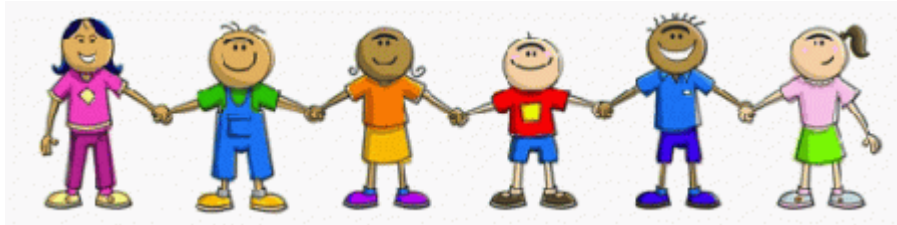
Sharon Kindred

Sharon Kindred
Headteacher

Stockingford Little Nursery

Nurture. Inspire. Grow

We look forward to learning with you!



Our Values

- Celebrating, respecting and valuing everyone as unique individuals
- Exploring, investigating and discovering through play
- Creating a safe, stimulating learning environment that promotes curiosity and awe & wonder
- Working together to encourage children and families to achieve their full potential
- Developing independence and resilience through positive relationships
- Laughing, loving, and living in the moment, to create lasting memories and dispositions for lifelong learning

The Little Nursery Day

The Little Nursery offers 3 hour sessions for children who are in receipt of 2 year funding, and also a number of paid places. Children attend part-time, either morning or afternoon sessions per week.

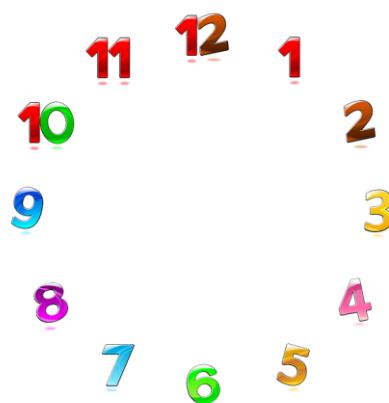
Morning session:

8.45 am - 11.45 am

- - - - -

Afternoon session:

12.30 pm - 3.30 pm



Keyworker Approach

Your child's keyworker is your first point of contact at Nursery.

We believe that children settle best when they have a key worker to relate to, and who knows them and their parents well.

We want to make the Nursery School a welcoming place where children settle quickly and easily because consideration has been given to the individual needs and circumstances of children and their families.

We know that the key worker approach benefits the child, parents, carers and the Nursery School by providing secure relationships in which children thrive and parents have confidence. Your keyworker will also be responsible for bringing together assessments of your child's development made by all staff that will be shared in their learning journal and through parent consultations during your time with us.

What do the children do at Little Nursery?

Because of children's growing desire to be independent, children will show you that they want to do things by themselves. Children are experiencing huge thinking, learning, social, and emotional changes that will help them to explore their new world, and make sense of it. In Little Nursery, we offer a wide range of learning activities and support development through play.

Little Nursery children follow the Early Years Foundation Stage Guidance. This culminates in a series of Early Learning Goals which children are assessed on at the end of their Reception year in Infant/Primary school.

For more information: www.foundationyears.org.uk

What can we do at home?

- Set up a special time to share books with your child.
- Encourage your child to take part in pretend play.
- Help your child to explore things around them .
- Teach your child simple nursery rhymes like Incy Wincy Spider.
- Point things out, name objects and have simple conversations with your child about things that really interest them.
- Give your child opportunities to walk, run, balance, climb and to use their developing fine motor co-ordination to build with blocks and make marks.

CURRICULUM

The Nursery curriculum is broad and challenging, and children learn particularly about:



Personal, Social and Emotional Development

- Beginning to build relationships with adults and their peers
- Becoming active learners
- Beginning to consider the feelings of others
- Beginning to manage their own behaviour, including sharing and taking turns

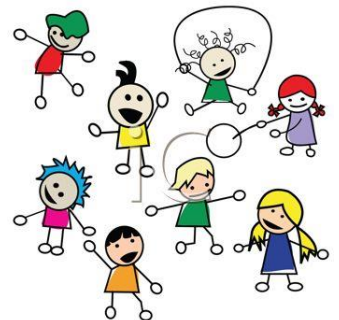
Communication and Language



- Developing how to listen attentively
- Building a greater understanding of language and communication
- Becoming good communicators, using the child's preferred method of communication including Makaton, gesture and the spoken word.

Physical Development

- Practice moving safely and with confidence - running, jumping, climbing, balancing, throwing
- Explore how to use tools with an adult - rolling pins, chinks, painting.



Forest School

Forest school is an inspirational experience that offers our children opportunities to achieve and develop confidence through hands-on learning in a woodland setting.



Child centered learning

Brain Development:

Babies are born with billions of brain cells and with stimulation these cells connect and form synapses. This is brain development, this is a child making "progress", this is when a brain is "lit up". Without stimulation the brain will not develop fully.

It is vital, therefore, that young children are stimulated and that the opportunities for synapse development are maximised. We need their brains to be "lit up" as much as possible. Brain activity and synapse formation are at their highest when a child is deeply engrossed in something which fascinates challenges and makes them happy. Every child is unique and we cannot predict or impose what will spark that deep fascination. Each child is at a different level of development and therefore something that will challenge one child will be mundane for the next. Equally one child will be at their happiest digging in the mud while another will enjoy sitting and creating a wonderful picture.

Our pedagogy (method and practice of teaching) is thus:

Children are born with a natural desire to explore and learn and practitioners can support them in this. We do this by creating an enabling environment (both physical and emotional) and through the relationships and interactions that the children experience. In continuous provision **we do not plan ahead**, rather we remain "in the moment" with the children as they explore and learn. We observe carefully, and enhance the learning whenever we spot a "teachable moment". Our observations, interactions and the outcomes are recorded afterwards. As a result our children can make outstanding progress.





How do we know how our child is getting on?

We make observations on children's progress and link these to the milestones of a child's development. We recognise that each child, and therefore their development, is unique. There will be opportunities for you to discuss how your child is getting on at Little Nursery with your keyworker, and also to share your child's learning journal with them.

"Children's progress is tracked in detail and scrutinised carefully."

"Children's skills, and their confidence to communicate effectively, flourish in this environment."

Ofsted 2018

We pass information of children's progress to Big Nursery Keyworkers prior to transfer to Big Nursery.

Sometimes your child may need some extra support at Little Nursery. This maybe around speech and language, or another area of learning that either you or Little Nursery have identified. If you are concerned about any aspect of your child's development please speak to your child's keyworker. We work closely with other agencies to ensure we put targets in place to support your child in a timely and effective manner.



"Some children speak little or no English and a few have special educational needs and/or disabilities (SEND). Almost all children make strong progress from their starting points and leave the school well prepared for their next stage in education. Children's skills, and their confidence to communicate effectively, flourish in this environment. This is also the case for children who speak English as an additional language." Ofsted 2018

What to Wear

It is essential that every child has a bag, containing a complete change of clothing, including underwear, nappies/pull-ups and wipes. The bag will be kept on your child's coat peg when they are at Little Nursery and taken home at the end of each session.

Easily washed clothes are best for children. Aprons are provided for painting and creative and water activities, but children still get messy!

Children will also need clothes that are easy to take off or pull up and down for when they need to go to the toilet. Please avoid tight fitting trousers, belts and dungarees.

Please name your child's clothing - including coats and shoes, and especially school clothing!

Please remember that children spend at least some time learning outside every day, so appropriate clothes and footwear are most important. When buying shoes for Little Nursery please remember that the children will be encouraged and supported to put them on and take them off by themselves. Shoes with Velcro fastenings are the easiest to manage. Avoid peep toe sandals as children can often trip up when wearing them.

Each child has a coat peg for his/her coat and bag. It will be labelled with their name and a photograph. This helps children to find their own coats and become more independent.

Relationships

Children are encouraged to develop relationships with both children and adults. **They are helped to develop an understanding of:**

- sharing
- respect
- self-discipline
- justice

We do this by:

- having clear expectations
- thoughtful use of praise
- setting good examples
- being consistent
- having clear consequences
- using closed choice
- wondering aloud for children



Shared learning with Parents

We value the importance of shared learning experiences between home and school. Please share activities your child has enjoyed at home with your keyworker, or by emailing photographs to parents1041@welearn365.com. In Little Nursery, we share our learning experiences with you through newsletters, our parent board in the Little Nursery and through conversations.

We offer shared experiences for you to take part in with your child such as Family day and Christmas crafts day, as well as workshop experiences to support literacy and maths. Keep a look out for our letters informing you of these.

Two Year Review

We will complete a 2 year development check with your child in Little Nursery. This review can be shared with your Health Visitor when they have their 2 year check.

Attendance

It is very important that children attend the Little Nursery regularly, making full use of their place. Regular attendance means children get into a routine that gives them the best start to their school life as they are able to access every opportunity to learn. If children's attendance is infrequent or if they have been absent and we have had no message to say why, the nursery school will contact you to ask for the nature of your child's absence. It is our policy to contact parents to enquire when children will be returning to school. In some circumstances, it may be necessary to withdraw the child's place so that it can be offered to another child.

Child Protection (Safeguarding)

As professionals working with children it is our responsibility to make sure children are kept safe. We have designated teachers for safeguarding, so if you have any concerns you can talk to them - please see the notice board for details.

If Little Nursery staff have any concerns about a child's safety, we will usually ask parents for further information. In some cases, we may need to seek further advice. We ask for your understanding and support in keeping all our children protected from harm.

*Under the Education Act 2002 (Section 175) schools must make arrangements to safeguard and promote the welfare of children. Parents/carers should know that the law (Children Act 1989) requires all school staff to pass on information which gives rise to a concern about a child's welfare, including risk from neglect, physical, emotional or sexual abuse. Staff will seek, in general, to discuss any concerns with the parent/carer and, where possible, seek their consent to make a referral to Children's Social Care if that is considered necessary. **This will only be done where such discussion will not place the child at increased risk of significant harm.** The school will seek advice from Children's Social Care when they have reasonable cause to suspect a child may be suffering or likely to suffer significant harm. Occasionally, concerns are passed on which are later found to be unfounded. Parents/carers will appreciate that the school's Designated Safeguarding Lead carries out their responsibilities in accordance with the law and acts in the best interests of all children.*

Protective behaviours

As part of our work on keeping children safe, we teach key messages about taking care of ourselves and recognising our feelings. Children are taught through the use of age appropriate stories, that they are the boss of their body and that it's ok to say no if they do not like, or do not want a particular physical contact such as a touch or a hug. We use the correct name for body parts - there is a sheet in your induction pack to support this.



Keeping Healthy!

Our snack time offers fruit and other healthy snacks and the children have milk or water to drink.

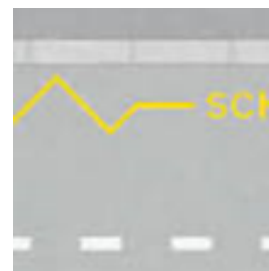
No Smoking Policy

The Centre has a policy of no smoking or use of e-cigarettes in the buildings and grounds at all times. We kindly ask you to respect this policy.



Safety

At an early age, children must be introduced to the importance of road safety. They need to be aware of traffic and know how to behave as pedestrians. Please make sure you park safely. Do not park directly outside the Centre. **PARKING OUTSIDE THE CENTRE ON THE ZIG ZAG LINES IS ILLEGAL**. Please also ensure the gates to the Little Nursery and the Little Nursery doors are kept closed.



Safety in the Building

It is parents' responsibility to keep their children safe and by their side as they come to or leave the Little Nursery.

Mobile Phones

We do not allow the use of mobile phones in the Little Nursery room. Please turn phones off or on silent and refrain from making or taking calls. Thank you. Mobile phone calls can be made or taken in the Centre entrance, or in the area just outside the Headteachers office.



Online safety

The Centre employs a number of strategies in order to maximise the opportunities offered by technology and to reduce the risks associated with the use of the Internet and mobile technologies. Please ask if you would like a copy of this policy.

Complaints

We hope that Little Nursery is a happy time for you and your child. However, we realise that sometimes things do go wrong, so if you do have any problems or queries, please discuss them with your keyworker or the Head Teacher. A copy of our complaints policy is available on our website or in the school office - please ask for a copy.

Disability Equality Policy

We provide a welcoming environment for children, toddlers, babies and their parents and carers from the Stockingford community to fulfil their potential, by sharing experiences and gaining support from each other, enabling them to develop a positive self image.

Our core values are built around providing a secure, collaborative and purposeful learning culture, where all children, families and staff are valued, cared for, listened to and challenged to be the best they can be. We are therefore equally ambitious for our disabled children, parents and staff. Please see our Disability Equality Policy for further information.

All our policies - e.g. Child Protection and safeguarding, medication, collection of children etc. are available for your inspection - please look on our website or ask at the office.

Uniform

Sweatshirts, T shirts, sun hats and drawstring bags with the Nursery logo on, can be bought from Reception or the office. These items offer good value for money, but are not compulsory.

Prices:

Sweatshirts	£7.50
Polo shirts	£6.50
T-shirts	£5.00
Pump bags	£3.00



Voluntary Contribution



Children are welcome to bring a £1 weekly voluntary contribution to help raise money for Little Nursery funds for special activities and to buy new resources for the children to enjoy.

For further information please see our Facebook page and website:

www.stockingfordnurseryschool.co.uk

Term and Holiday Dates

Academic Year 2021-2022



Autumn Term 2021

Teacher Training Day
September 2021

Thursday 2nd

Term starts:

Friday 3rd September 2021

Half term:

Monday 25th - Friday 29th October 2021

Term ends:

Friday 17th December 2021

Spring Term 2022

Teacher Training Day

Tuesday 4th January 2022

Term starts:

Wednesday 5th January 2022

Half term:

Monday 21st - Friday 25th February 2022

Term ends:

Friday 8th April 2022

Summer Term 2022

Teacher Training Day

Monday 25th April 2022

Term starts:

Tuesday 26th April 2022

May Day:

Monday 2nd May 2022

Half term:

Monday 30th May - Friday 3rd June 2022

Teacher Training Day

Monday 6th June 2022

Term ends:

Wednesday 20th July 2022

Teacher Training Day

Thursday 21st July 2022

Additional Bank Holiday

Friday 22nd July 2022